



The Alliance to Conserve Nashville's Highland Rim Forest

<https://nashvillehighlandrimforest.org/>

Presenter: Anne Choquette

Panel Session:

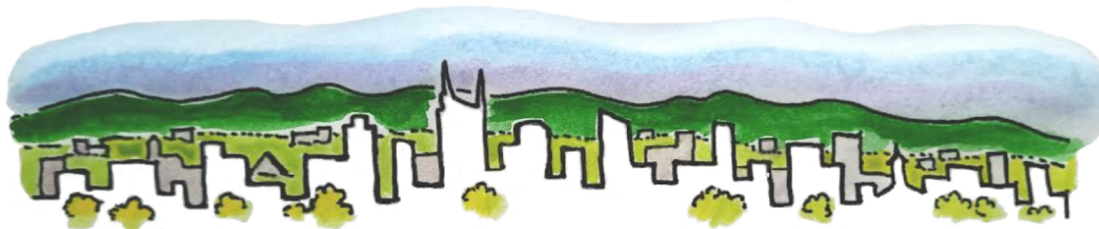
*"Balancing Act: Natural Resource
Conservation and Land Development"*

**ALLIANCE
LEADERSHIP TEAM:**
Judson Newbern, Lead
Ian Rhett
George Ewing
Anne Choquette
Catherine Price
Elizabeth Fox
John Norris

Assisted by:
Emily Granstaff, U.S.FWS/SECAS
Dr. Samantha Allen and
Karo M Mittagadapa, TN Tech

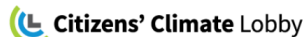


TN Urban Forestry Council 2024 Annual Conference
11/14-15/2024 [at <https://tufc.com/event/2024-annual-conference/>]



Conserve Nashville's Highland Rim Forest

Alliance Partners

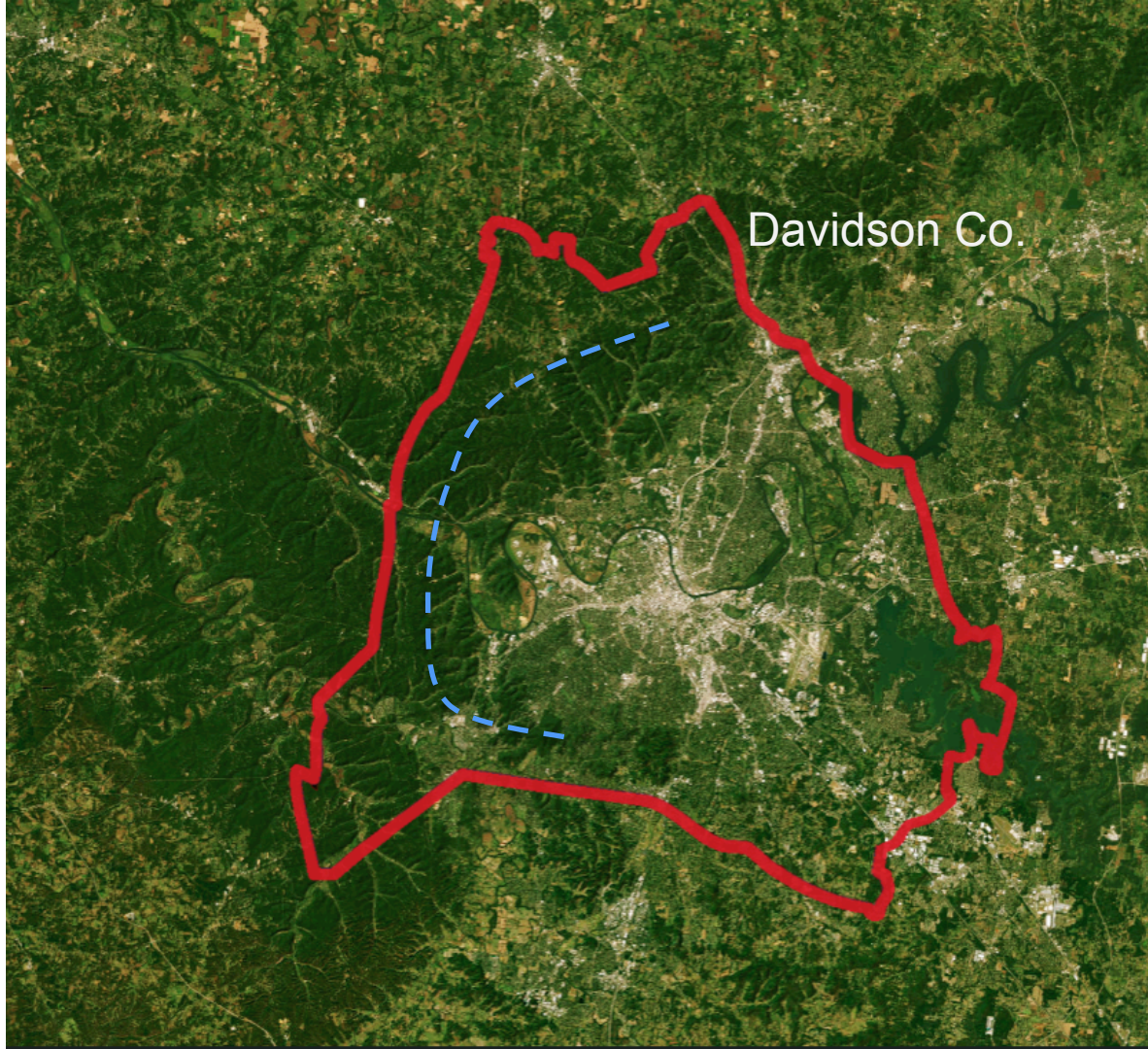




What is
NASHVILLE'S HIGHLAND RIM FOREST?

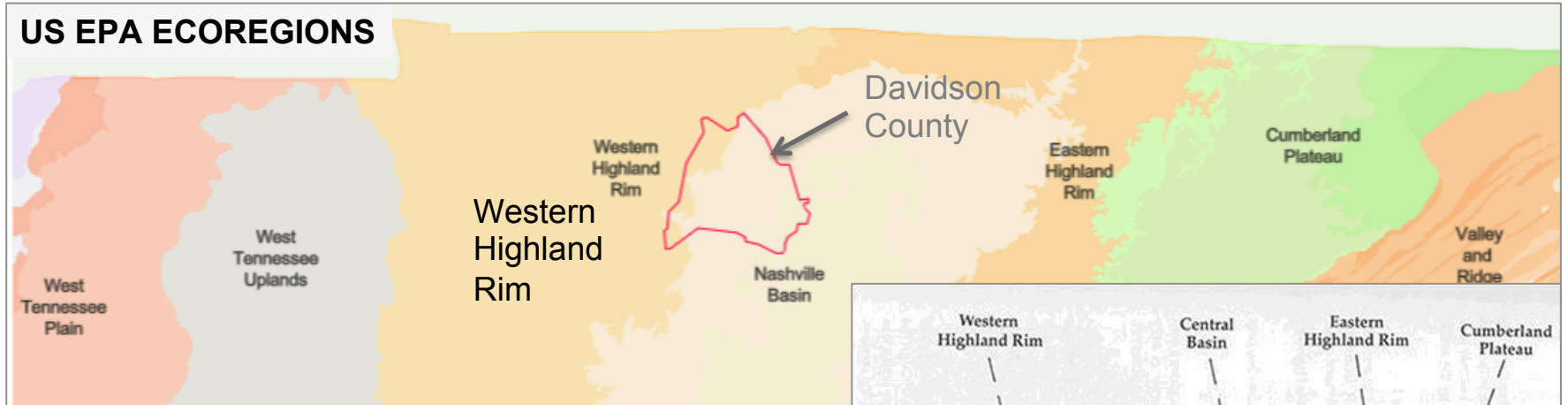
Aerial View

Nashville's Highland Rim Forest is clearly visible from space.

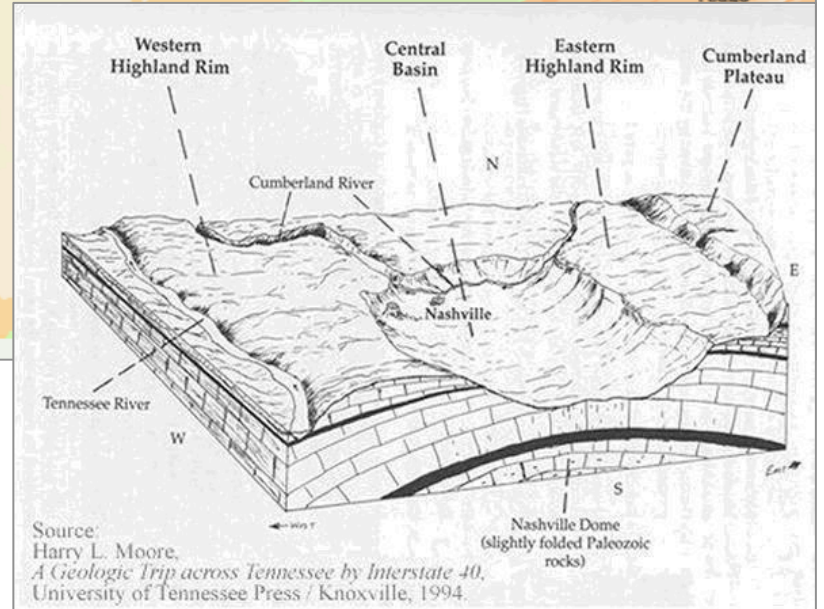


Western Highland Rim: Physiographic region and Level IV Ecoregion.

US EPA ECOREGIONS



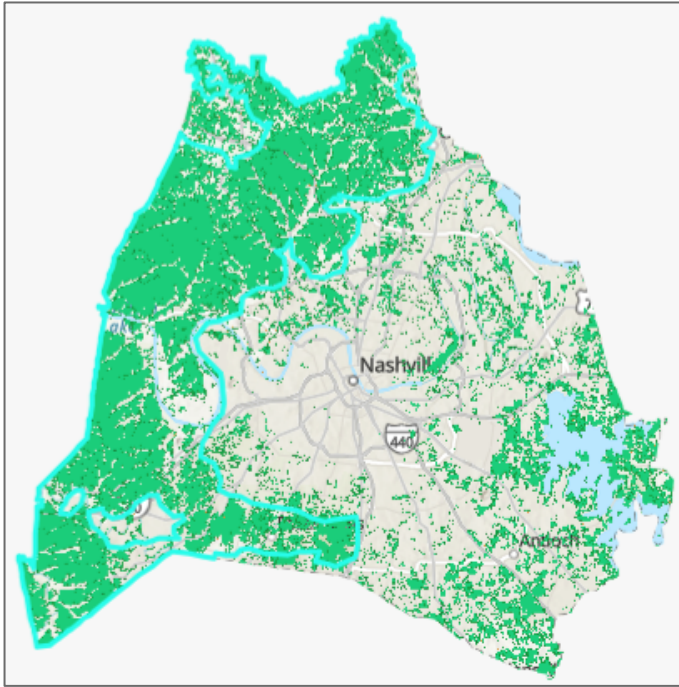
PHYSIOGRAPHIC REGIONS





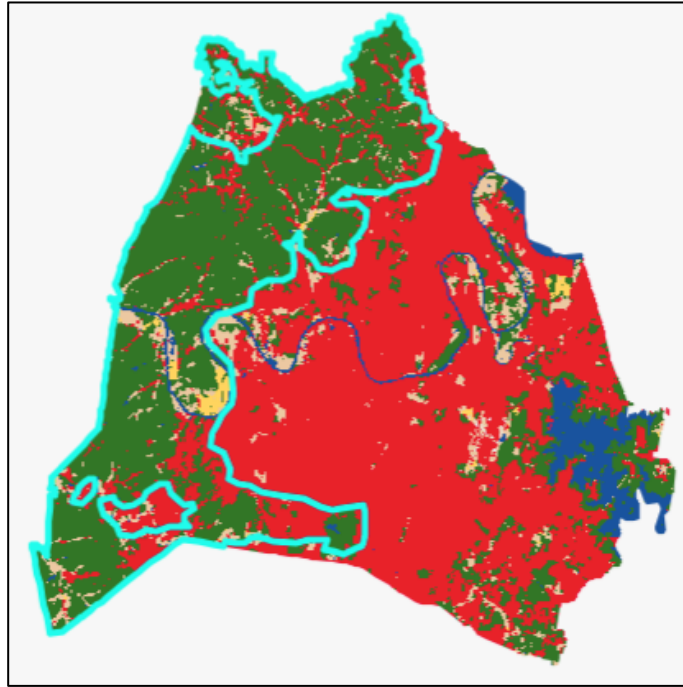
What is special about
NASHVILLE'S HIGHLAND RIM FOREST?

Our Carbon Bank



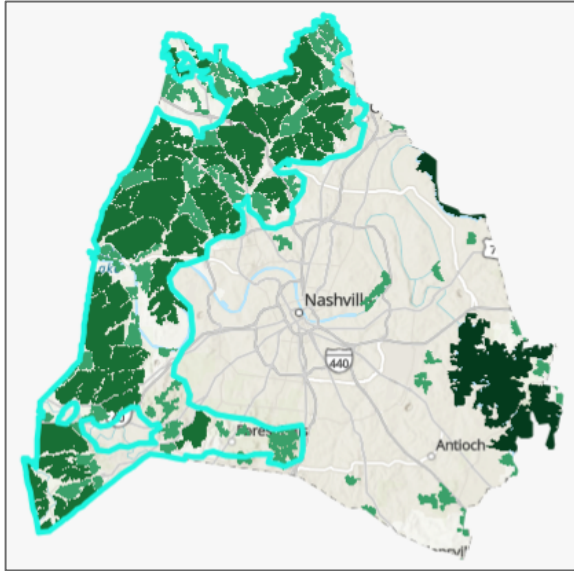
Map Source: USDA Forest Service FIA

Our Tree Canopy



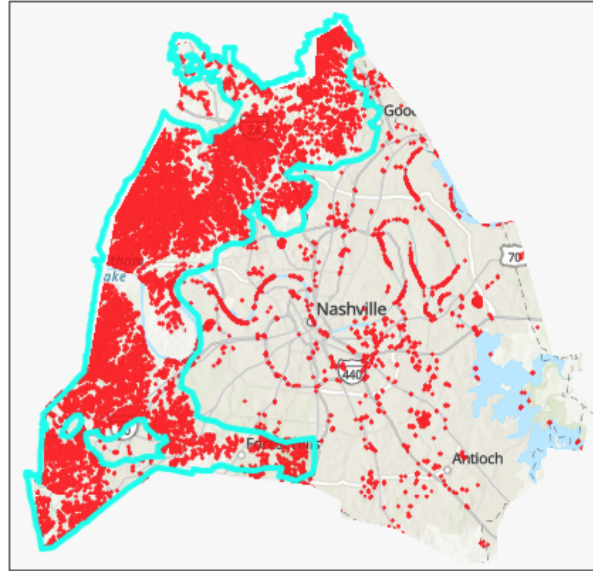
Map Source: Sentinel-2 10m land use/land cover time series. Produced by Impact Observatory and Esri.

Habitat Cores



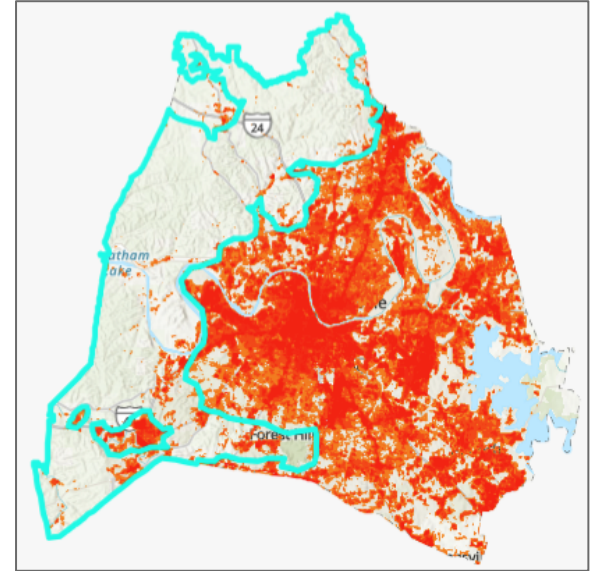
Map Source: SECAS Blueprint - Intact Habitat Cores 2023

Steep Slopes



Map Source: Greater Nashville Regional Council Open Data Portal

Heat Island Effect

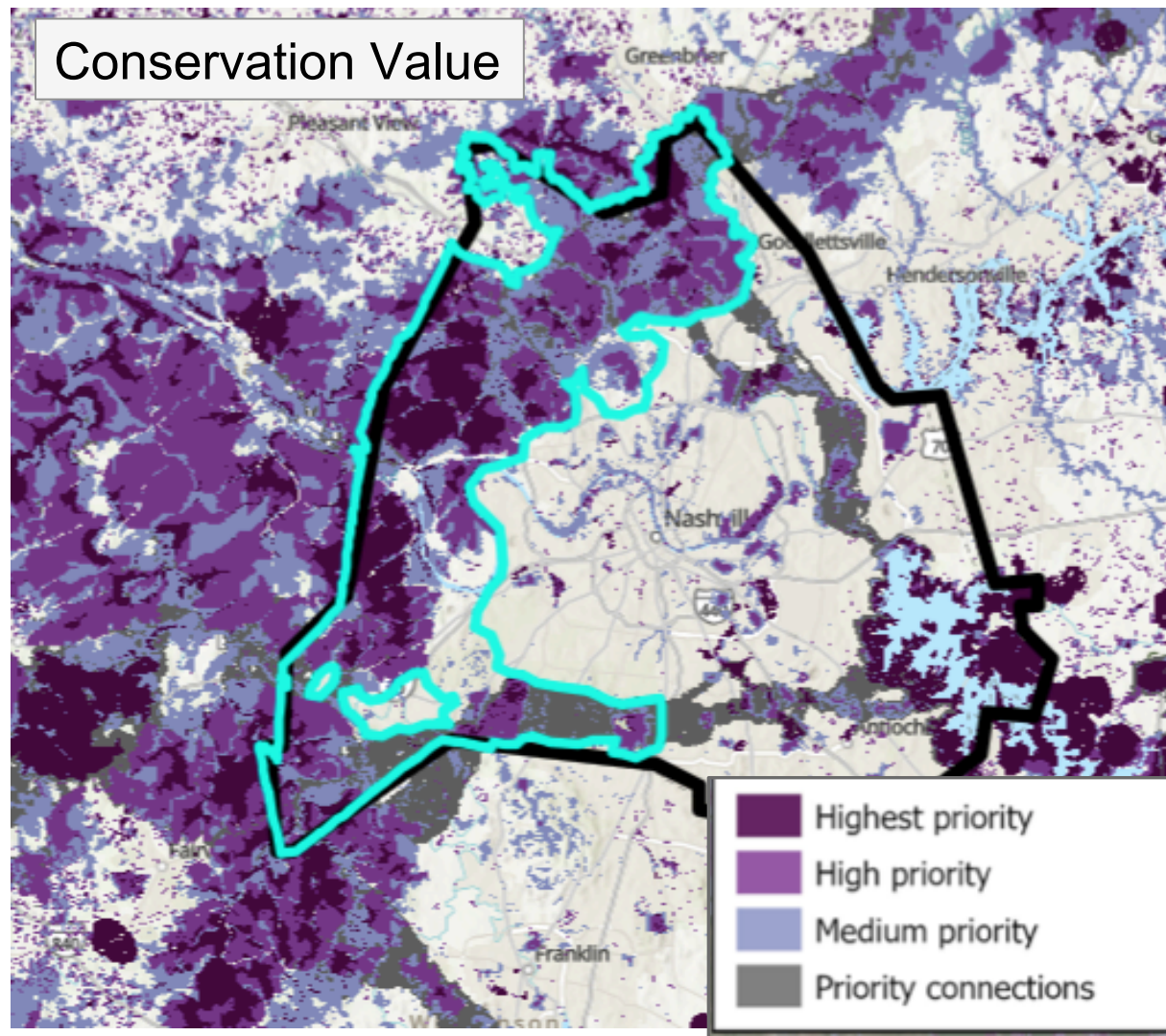


Map Source: Trust for Public Land Urban Heat Island Project -2023

The SECAS Conservation Blueprint Map

Defining Nashville's Highland Rim Forest

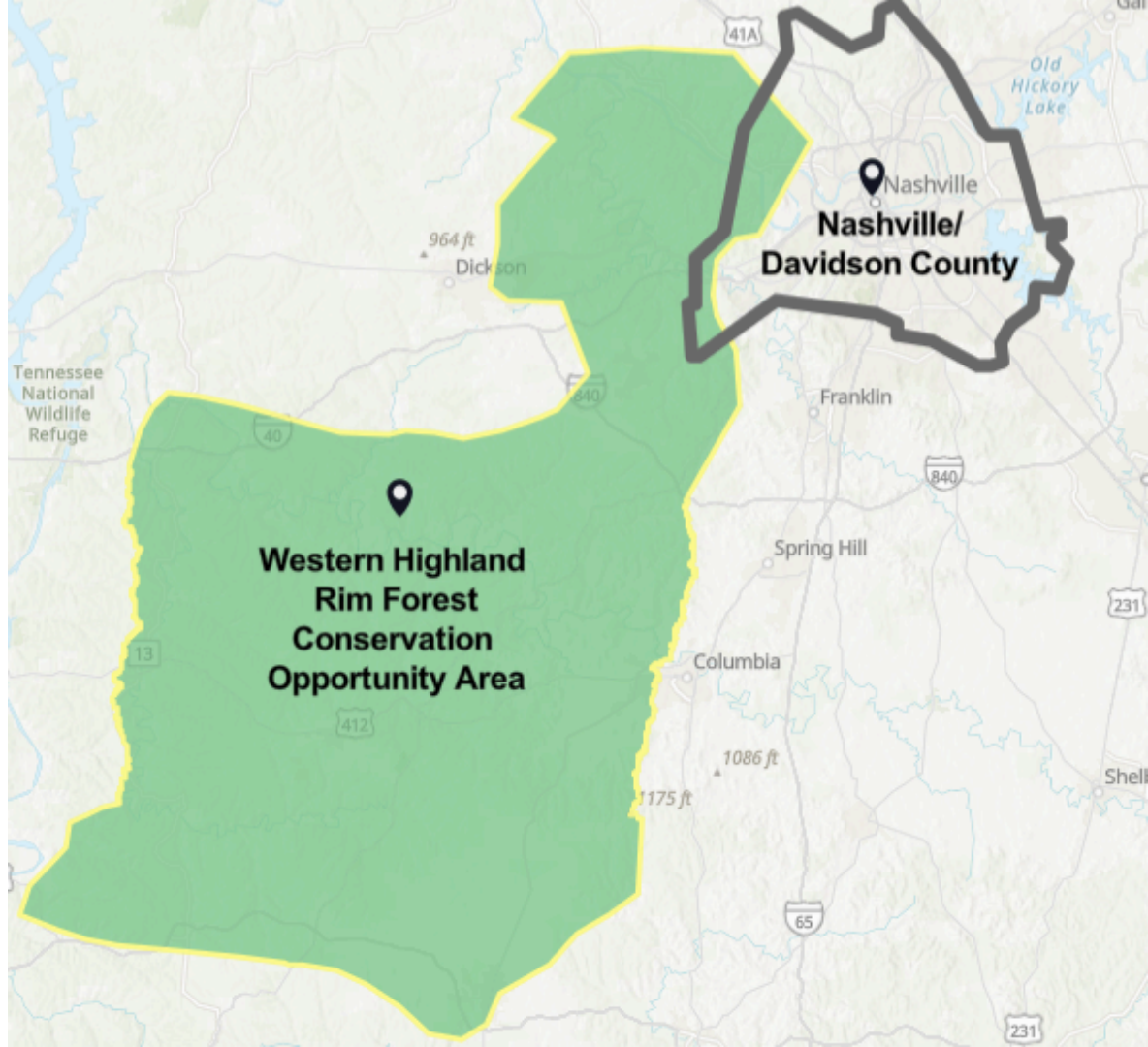
127,000 acres with
97,000 (76%) priority
acres



REGIONAL “CONNECTIVITY”

Connects with a vast forest
recognized as a State
Conservation Opportunity
Area

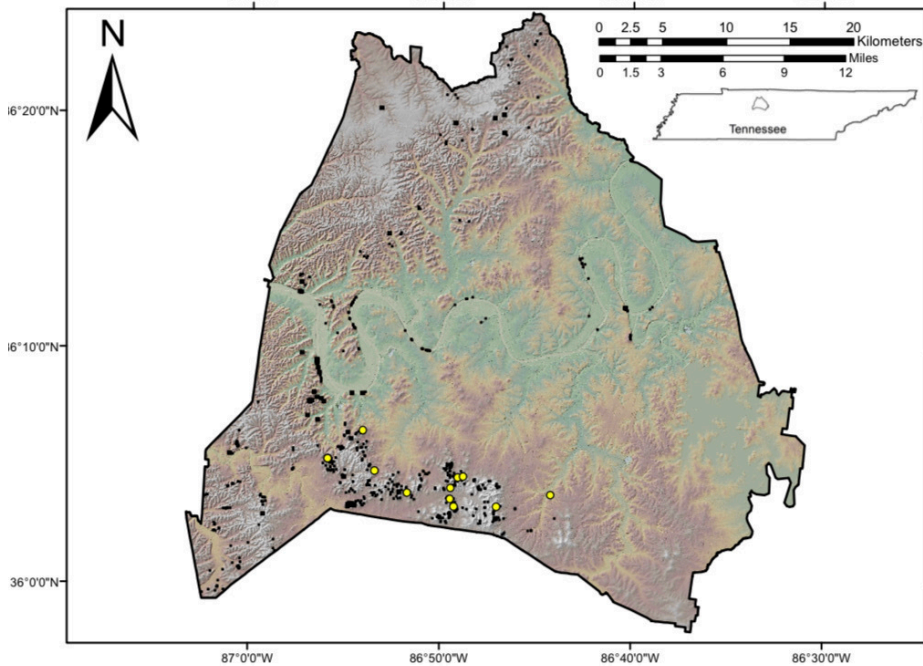
One of TWRA’s State
Wildlife Action Plan COA’s





STEEP SLOPES AND LANDSLIDE PRONE

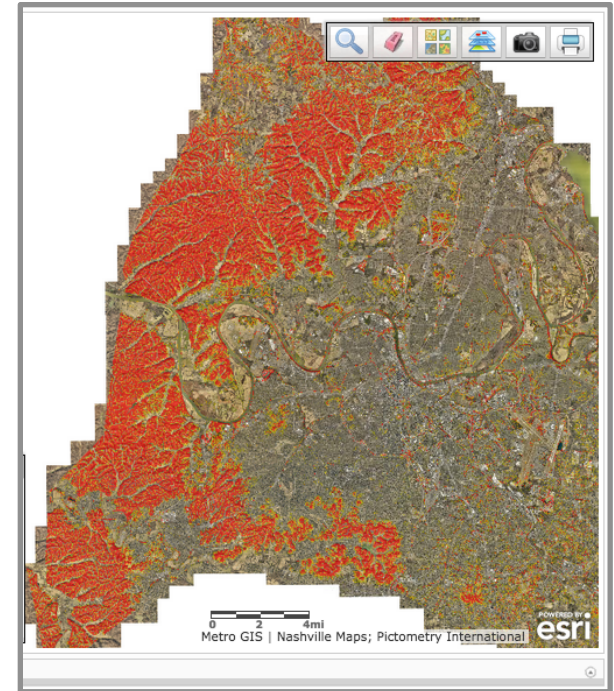
Landslides in Davidson County May 2010 Flood, >560 landslides



SOURCE: FRANCIS ASHLAND / USGS

From Eggers, 2022,
<https://wpln.org/post/landslides-are-a-growing-threat-in-nashville-blame-climate-change-and-developers>

Locations of Steep (>25%) Slopes



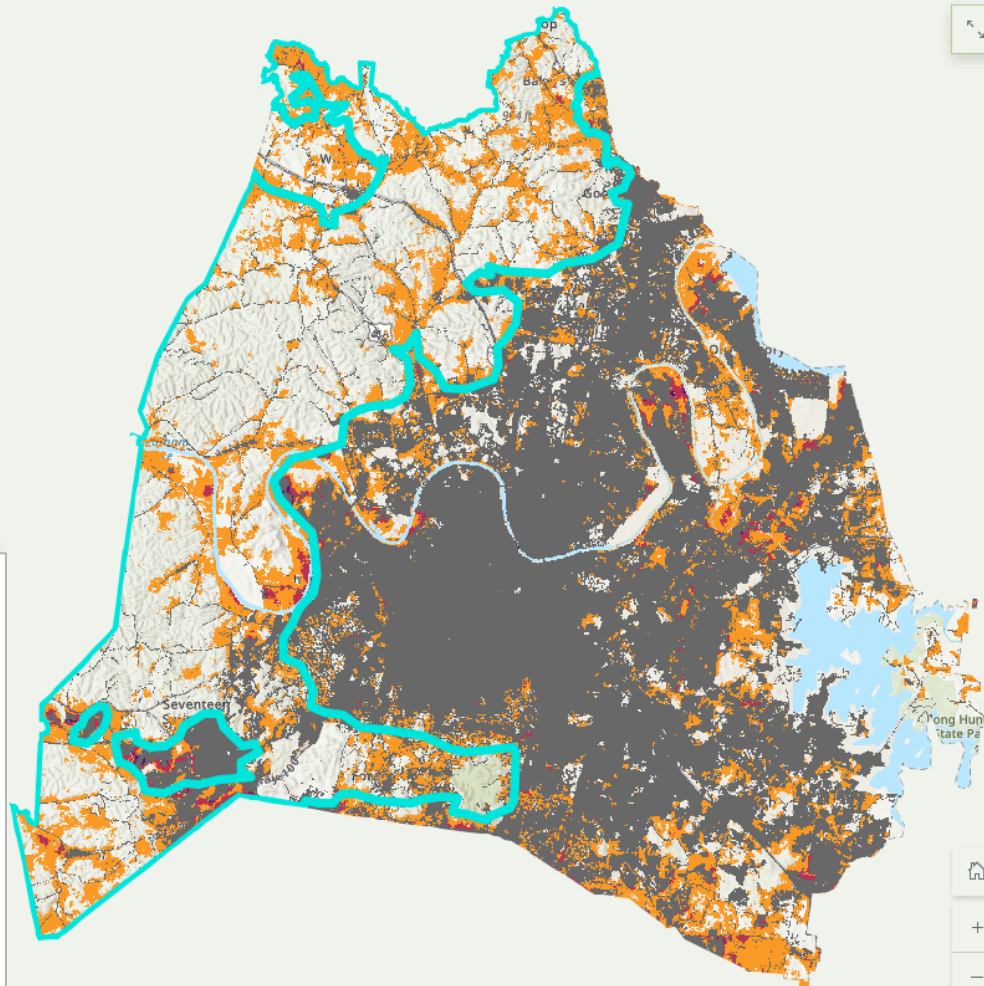
The Forest's trees help to stabilize steep, landslide-prone slopes through root networks and soil dewatering. Deforestation and improper construction increase landslide risks.



DEVELOPMENT OUTLOOK

NH Rim Forest:
12% already developed,
46% at risk by 2060.

- Urban in 2021
- Moderate likelihood of urbanization (2 - 25% probability)
- High likelihood of urbanization (25 - 50% probability)
- Very high likelihood of urbanization (>50% probability)



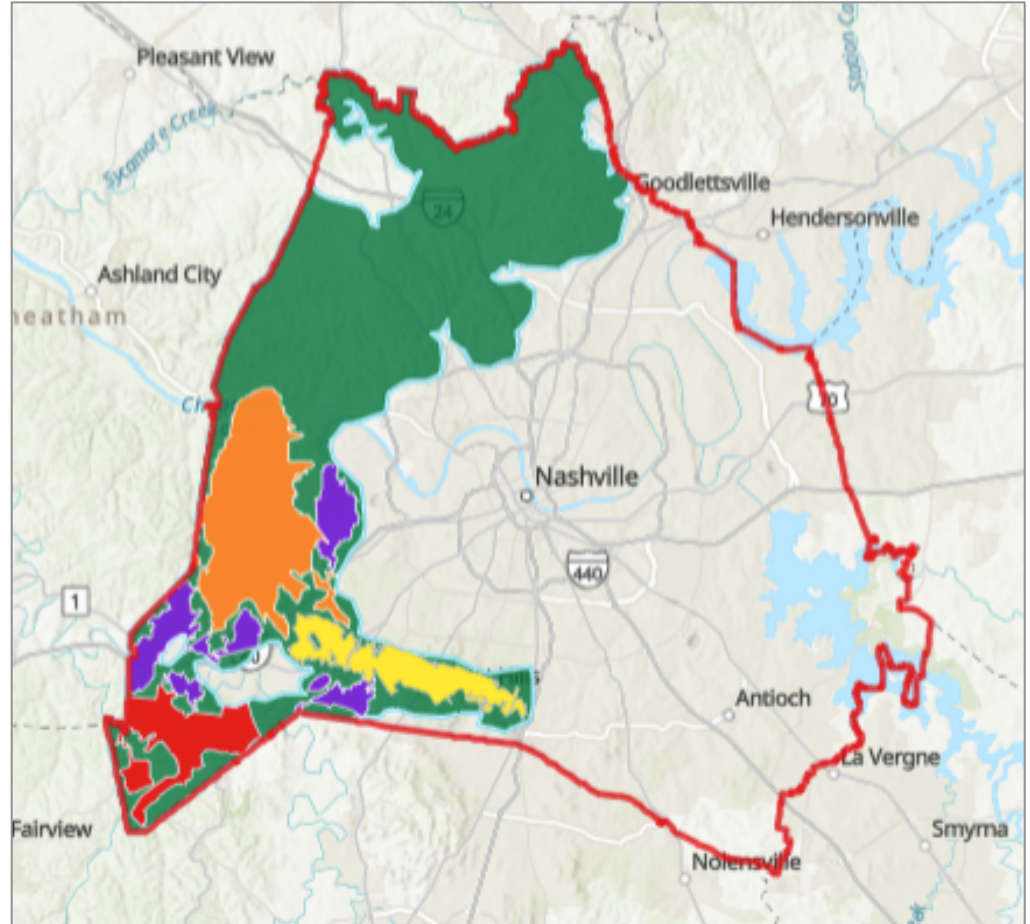
Source: 2024 SECAS Blueprint, USFWS



THE WORLD'S LARGEST URBAN FOREST?

Nashville's Highland Rim Forest

ALL FOUR of the “largest urban forests” **COMBINED** are **less than half** of the priority conservation area in **Nashville's Highland Rim Forest**





MULTIPLE CITY-
BACKED PLANS CALL
FOR CONSERVING
THIS GRAND FOREST

THE CHALLENGE:
HOW TO IMPLEMENT
THESE PLANS?

Nashville Open Space Plan Vision

